



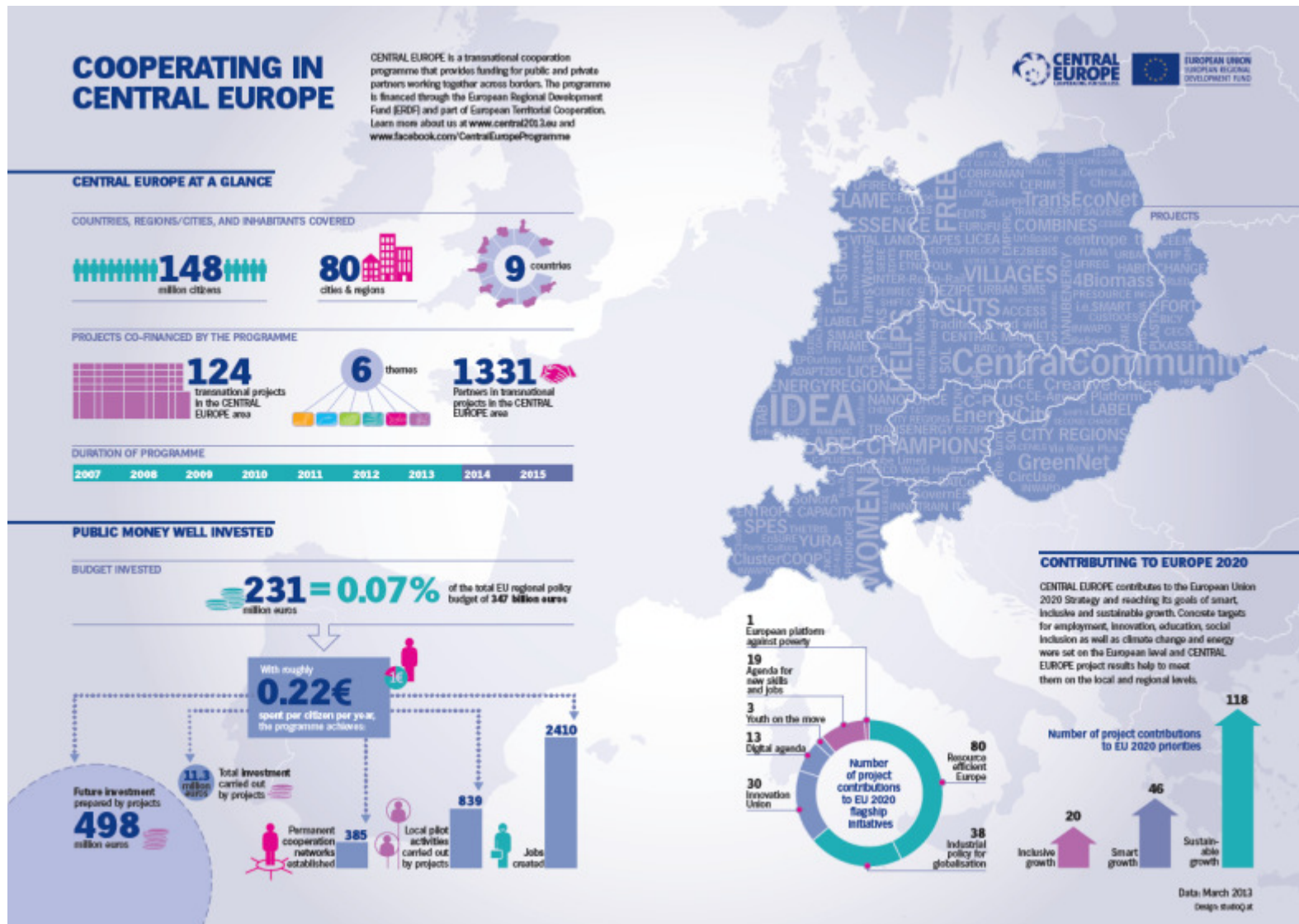
Regional Energy Concepts Closing Conference
Munich, 6. November 2014

Introducing INTERREG VB - CENTRAL EUROPE

Dr. Bernd Diehl, Deutsche Kontaktstelle Mitteleuropa



Achievements of CENTRAL EUROPE since 2007



What's new from 2014 onwards?



A new geography

Partnerships must be composed by at least **three financing partners from three countries**, at least two of them located in the CENTRAL EUROPE area

(AT, CZ, DE, **HR**, HU, IT, PL, SK, SI)

In duly justified cases, projects can be implemented **outside** the cooperation area

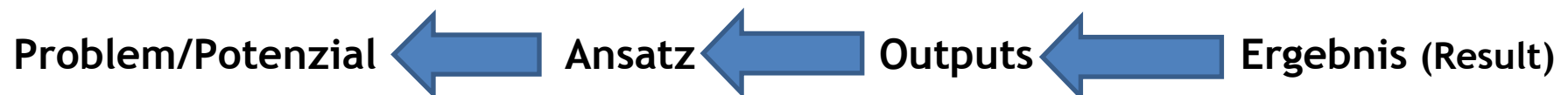
What's new from 2014 onwards?



Result orientation: a new approach to projects

- Projects must tackle challenges, needs and potentials of the area, **building on existing knowledge**
- Projects must concentrate their efforts within the programme specific (thematic) objectives
- Projects must be able to deliver realistic results, driving a **measurable change** (improvement) of the initial situation in the area

Welche konkreten Ergebnisse erwarte ich? Welche Ergebnisse werden vom Programm erwartet (Resultindikatoren)?



What's new from 2014 onwards?



EU Thematic Objectives

TO1: Strengthening research, technological development and innovation

TO 4: Supporting the shift towards a low-carbon economy in all sectors

TO 6: Preserving and protecting the environment and promoting resource efficiency

TO 7: Promoting sustainable transport removing bottlenecks in key network infrastructure



Cooperating beyond borders in CENTRAL EUROPE to make our cities and regions better places to live and work

CENTRAL EUROPE Priorities

P1: Cooperating on innovation to make CENTRAL EUROPE more competitive

P2: Cooperating on low carbon strategies in CENTRAL EUROPE

P3: Cooperating on natural and cultural resources for sustainable growth in CENTRAL EUROPE

P4: Cooperating on transport to better connect CENTRAL EUROPE

What we will co-finance



Priority 2

Cooperating on low-carbon strategies in CENTRAL EUROPE

Objectives



To develop and implement solutions for increasing energy efficiency and renewable energy usage in public infrastructures

To improve territorially based low-carbon energy planning strategies and policies supporting climate change mitigation

To improve capacities for mobility planning in functional urban areas to lower CO2 emissions

Actions



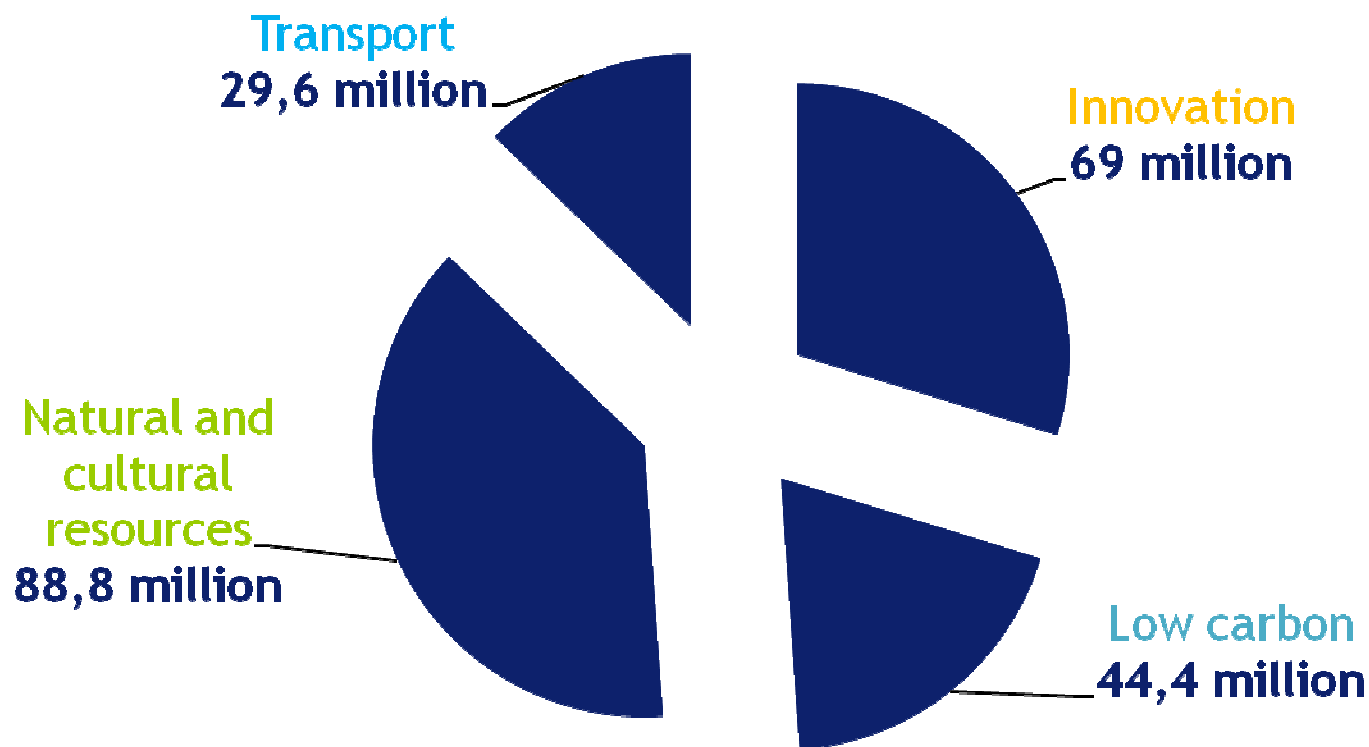
- Increase energy performance (energy efficiency and renewable energy usage) in public infrastructure
- Novel energy saving technologies
- Harmonise standards and certification systems
- Innovative energy services, incentives and financing schemes

- Improve regional energy performance
- Use endogenous renewable energy potentials
- Improve energy management in the private sector
- Reduce energy consumption (demand focused)
- Improve coordination of energy networks

- Integrated mobility concepts and services
- governance systems for low-carbon mobility
- introduce novel low-carbon technologies for urban public transport (incl. Innovative financing models)
- foster smart low-carbon urban mobility



ERDF allocation per priority



- ERDF co-financing rate:
 - 85 % (CZ, HR, HU, PL, SK, SI)
 - 80 % (AT, DE, IT)

Features of the first call



Key facts and figures of the first call for proposals

- Open to **all programme priorities** and **all specific objectives**
- Organised according to a **“two-step”** procedure
- Indicative financial allocation up to **EUR 80 million ERDF**
- **Web-based** application form
- **Simplified formal requirements** for submission
- Will be launched upon adoption of the programme by the European Commission (indicatively in **early 2015**)

Features of the first call



Two-step call procedure

- Step 1 will be **limited to few fields of the application form**:
 - Territorial challenges, transnational cooperation approach
 - Project focus - objectives and expected results
 - Sustainability and transferability
 - Policy context
 - Basic information on thematic work packages
 - Indicative budget
 - Partner information
- **Continuity** between the two steps must be ensured in terms of:
 - Project focus (objectives and expected results)
 - Partnership (only limited flexibility, Lead Applicant must remain the same)
 - Total project budget



Kontakt



Nationale Kontaktstelle CENTRAL EUROPE

Leibniz-Institut für ökologische
Raumentwicklung
Weberplatz 1 / 01217 Dresden

Dr. Bernd Diehl
Tel.: 0351 46 791 277
Mail: b.diehl@ioer.de

Robert Schillke
Tel.: 0351 46 791 216
Mail: r.schillke@ioer.de

Web: www.central2013.de

CENTRAL EUROPE Programm

Joint Secretariat
Kirchberggasse 33-35/11
1070 Vienna

Austria

Phone +43 (0) 1 8908 088 2403

Mail info@central2013.eu

Web www.central2013.eu and
www.central2020.eu